

Just One of Those Things

Pepper Adams

$\text{♩} = 314$

1 E^{-7}

Measures 1-2: Bass line in 4/4 time, key of D major. Measure 1 starts with a whole rest, followed by quarter notes D2, E2, F#2, G2. Measure 2 has quarter notes A2, B2, C#2, D3. A first ending bracket labeled '1' spans measures 1-2.

E^{-7} E^{-7}

Measures 3-4: Measure 3 has quarter notes D3, C#2, B2, A2. Measure 4 has quarter notes G2, F#2, E2, D3. A first ending bracket labeled '1' spans measures 3-4.

3 $F\#^{-7}$ B^7 G^7

Measures 5-6: Measure 5 has quarter notes G2, F#2, E2, D3. Measure 6 has quarter notes C#2, B2, A2, G2. A first ending bracket labeled '1' spans measures 5-6.

6 $C\#^0$ C^{-6}

Measures 7-8: Measure 7 has quarter notes G2, F#2, E2, D3. Measure 8 has quarter notes C#2, B2, A2, G2. A first ending bracket labeled '1' spans measures 7-8.

9 G/B $B\flat^7$ A^{-7} D^7

Measures 9-12: Measure 9 has quarter notes G2, F#2, E2, D3. Measure 10 has quarter notes C#2, B2, A2, G2. Measure 11 has quarter notes F#2, E2, D3, C#2. Measure 12 has quarter notes B2, A2, G2, F#2. A first ending bracket labeled '1' spans measures 9-12.

13 G^6 $G\#^0$ A^{-7}

Measures 13-15: Measure 13 has quarter notes G2, F#2, E2, D3. Measure 14 has quarter notes C#2, B2, A2, G2. Measure 15 has quarter notes F#2, E2, D3, C#2. A first ending bracket labeled '1' spans measures 13-15.

16 $F\#^0$ $B^7\#9$ E^{-7}

Measures 16-18: Measure 16 has quarter notes G2, F#2, E2, D3. Measure 17 has quarter notes C#2, B2, A2, G2. Measure 18 has quarter notes F#2, E2, D3, C#2. A first ending bracket labeled '1' spans measures 16-18.

19 $F\#^{-7}$ B^7 G^7

Measures 19-22: Measure 19 has quarter notes G2, F#2, E2, D3. Measure 20 has quarter notes C#2, B2, A2, G2. Measure 21 has quarter notes F#2, E2, D3, C#2. Measure 22 has quarter notes B2, A2, G2, F#2. A first ending bracket labeled '1' spans measures 19-22.

23 $C\#^0$ C^{-6} G/B $B\flat^7$

Measures 23-26: Measure 23 has quarter notes G2, F#2, E2, D3. Measure 24 has quarter notes C#2, B2, A2, G2. Measure 25 has quarter notes F#2, E2, D3, C#2. Measure 26 has quarter notes B2, A2, G2, F#2. A first ending bracket labeled '1' spans measures 23-26.

27 A^{-7} D^7 G^6 $G\#^0$

Measures 27-30: Measure 27 has quarter notes G2, F#2, E2, D3. Measure 28 has quarter notes C#2, B2, A2, G2. Measure 29 has quarter notes F#2, E2, D3, C#2. Measure 30 has quarter notes B2, A2, G2, F#2. A first ending bracket labeled '1' spans measures 27-30.

31 G^{-7} C^7 F^{maj7} $F\#^0$

Measures 31-34: Measure 31 has quarter notes G2, F#2, E2, D3. Measure 32 has quarter notes C#2, B2, A2, G2. Measure 33 has quarter notes F#2, E2, D3, C#2. Measure 34 has quarter notes B2, A2, G2, F#2. A first ending bracket labeled '1' spans measures 31-34.

35 G^{-7} C^7 F^6

39 E^{-7} A^7 D^6

42 $G^{\#0}$ G^{-7} $F^{\#-7}$

46 F^0 A^{-7} $F^{\#0}$ $B^7\#9$ E^{-7}

50 $F^{\#-7}$ B^7 G^7

54 $C^{\#0}$ C^{-6}

57 G/B E^7 A^{-7} D^7

61 G^{maj7} $F^{\#0}$

64 B^7 E^{-7}

67 $F^{\#-7}$ B^7 G^7

70 $C^{\#0}$ C^{-6}

73 G/B B \flat ⁷ A⁻⁷

76 D⁷ G^{maj7} G \sharp ^{o7}

79 A⁻⁷ F \sharp ^o B \flat ⁷ #9 E⁻⁷ vib

83 F \sharp ⁻⁷ B⁷ G⁷

86 C \sharp ^o C⁻⁶

89 G/B B \flat ⁷ A⁻⁷ D⁷

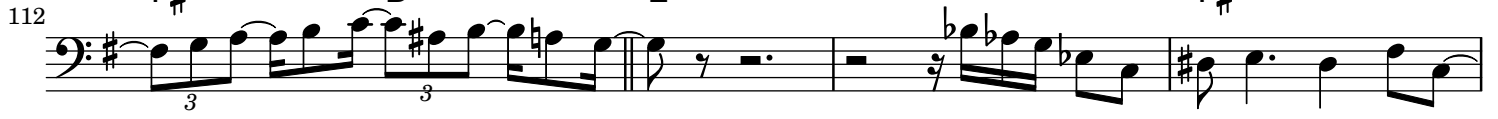
93 G^{maj7} G \sharp ^{o7} G⁻⁷

96 C⁷ F⁶ F \sharp ^o

99 G⁻⁷ C⁷ F⁶

102 E⁻⁷ A⁷

105 D⁶ G \sharp ^o

G⁻⁷F^{#-7}F^oA⁻⁷F^{#o}B^{7#9}E⁻⁷F^{#-7}B⁷G⁷C^{#o}C⁻⁶

G/B

E⁷A⁻⁷D⁷G^{maj7}F^{#o}B⁷